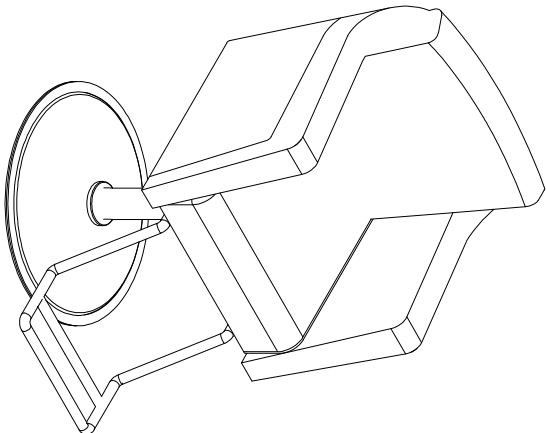


# Assembly Instructions



Eros Styling Chair  
Model #AV-1075

PARTS LIST*			
Part	Qty.	Description	
A	1	Base and hydraulic	
B	1	Chair top	
C	1	Footrest	
D**	8	Bolt + washer + lock washer	

\*Open all boxes to check for parts before beginning assembly.

\*\*All bolt/washer sets are already in the brackets and footrest.

Tools required:

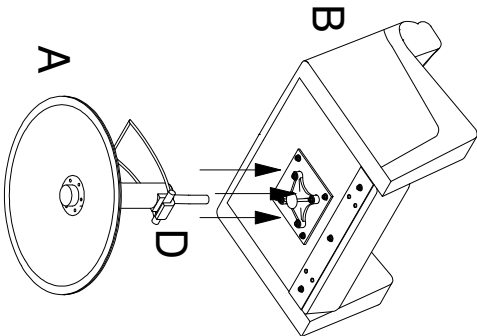
Allen wrench (included)



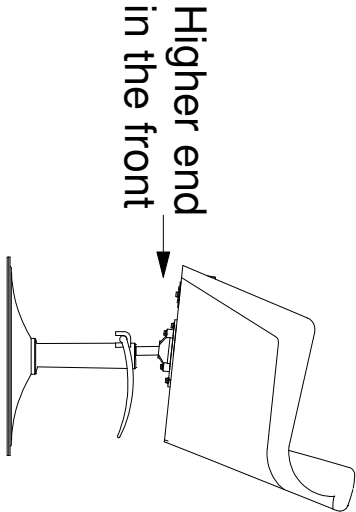
1

! ALWAYS KEEP HYDRAULIC BASE UPRIGHT.  
THE HYDRAULIC SHOULD NEVER BE  
TURNED UPSIDE-DOWN !

- 1) Locate the base with attached hydraulic foot pump (A) and remove the two bolts holding on the small cushion.
- 2) Discard the cushion and bolts.

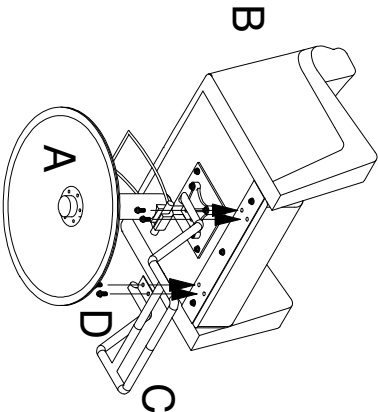


- 3) Place the chair (B) on top of the base and hydraulic (A) so that the chair fits into the indentation of the hydraulic and secure the chair by pushing the chair down with force.
- 4) Make sure that the higher end of the bracket on top of the hydraulic is in the front.



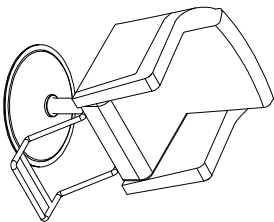
2

- 1) Position the footrest so that the four front bracket holes on the chair are in line with the four holes in the brackets of the footrest (C).
- 2) Insert four bolts into the holes as shown.



3

- 1) Chair is assembled.



## !! Safety and Precautionary Information !!

- Place the chair on a FLAT and LEVEL surface.
- Confirm that the chair hydraulic is at the lowest setting before customer use.
- Operator should always assist customer when entering and exiting the chair.
- DO NOT step or stand on the footrest. This can cause the chair to tip over.
- Footrest is optional.

Failure to follow these instructions could result in injury.